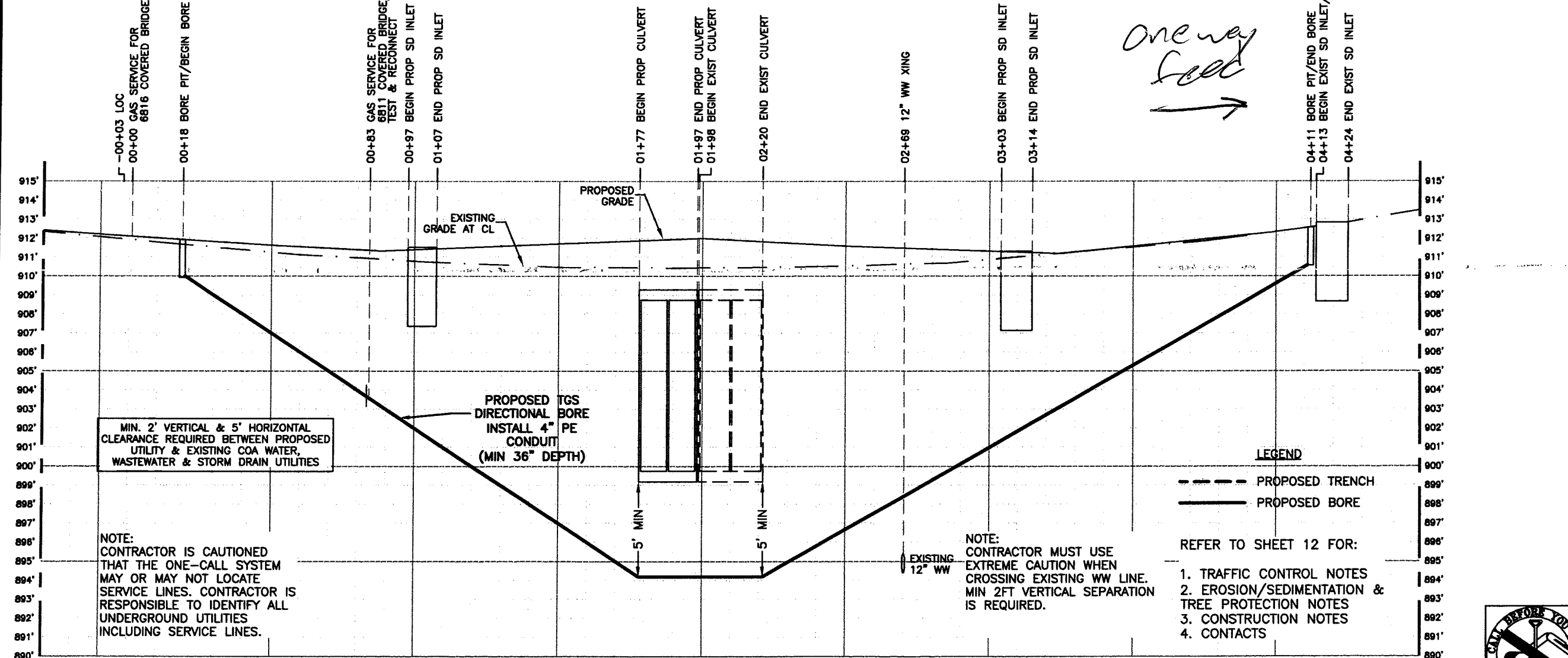
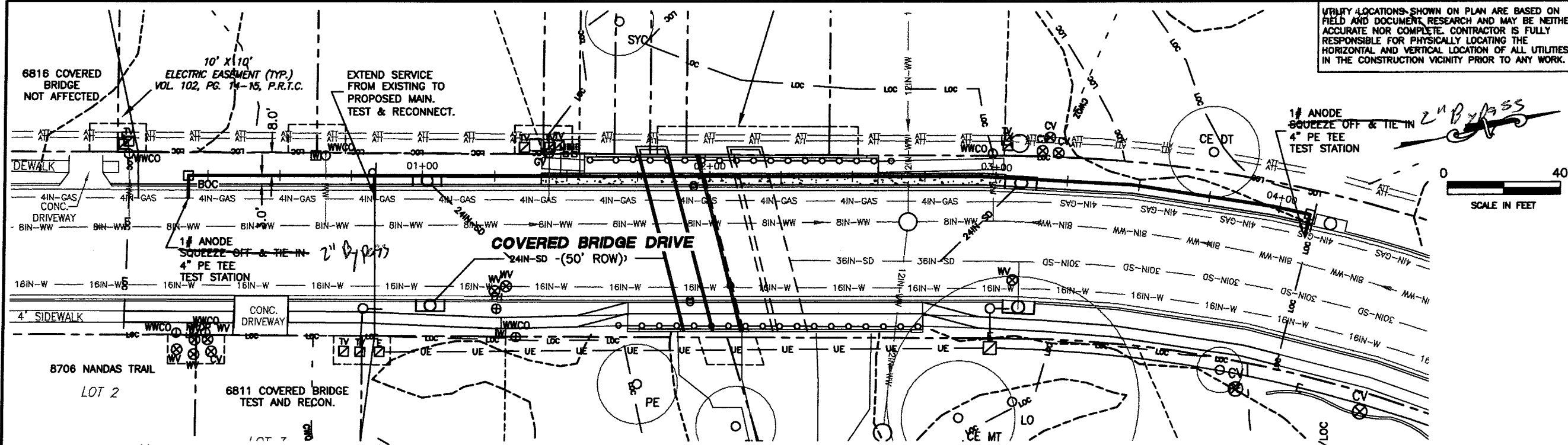
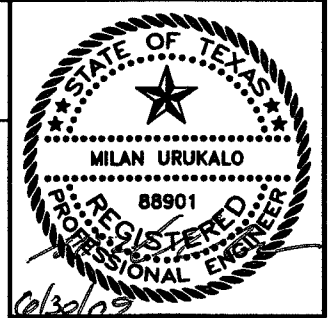


UTILITY LOCATIONS SHOWN ON PLAN ARE BASED ON FIELD AND DOCUMENT RESEARCH AND MAY BE NEITHER ACCURATE NOR COMPLETE. CONTRACTOR IS FULLY RESPONSIBLE FOR PHYSICALLY LOCATING THE HORIZONTAL AND VERTICAL LOCATION OF ALL UTILITIES IN THE CONSTRUCTION VICINITY PRIOR TO ANY WORK.



MIN. 2' VERTICAL & 5' HORIZONTAL CLEARANCE REQUIRED BETWEEN PROPOSED UTILITY & EXISTING COA WATER, WASTEWATER & STORM DRAIN UTILITIES

NOTE: CONTRACTOR IS CAUTIONED THAT THE ONE-CALL SYSTEM MAY OR MAY NOT LOCATE SERVICE LINES. CONTRACTOR IS RESPONSIBLE TO IDENTIFY ALL UNDERGROUND UTILITIES INCLUDING SERVICE LINES.

PROPOSED TGS DIRECTIONAL BORE INSTALL 4" PE CONDUIT (MIN 36" DEPTH)

NOTE: CONTRACTOR MUST USE EXTREME CAUTION WHEN CROSSING EXISTING WW LINE. MIN 2FT VERTICAL SEPARATION IS REQUIRED.

LEGEND
 - - - - - PROPOSED TRENCH
 ————— PROPOSED BORE

REFER TO SHEET 12 FOR:
 1. TRAFFIC CONTROL NOTES
 2. EROSION/SEDIMENTATION & TREE PROTECTION NOTES
 3. CONSTRUCTION NOTES
 4. CONTACTS

HORIZONTAL: 1"=40'
 VERTICAL: 1"=6'

enco consulting
 316 Nautilus Avenue
 Austin, Texas 78738
 Voice: 512-261-3001
 Fax: 512-261-7001



CIP-ONION CREEK CULVERT AT COVERED BRIDGE-RELO
 UTILITY ALIGNMENT, EROSION/SEDIMENTATION CONTROL PLAN, TREE PROTECTION PLAN AND TRAFFIC HANDLING LAYOUT



GENERAL PERMIT PROGRAM



SHEET INFORMATION
 DATE: 5/6/09
 SHEET 13 OF 13
 CAD FILE: TGS-COVERED BRIDGE